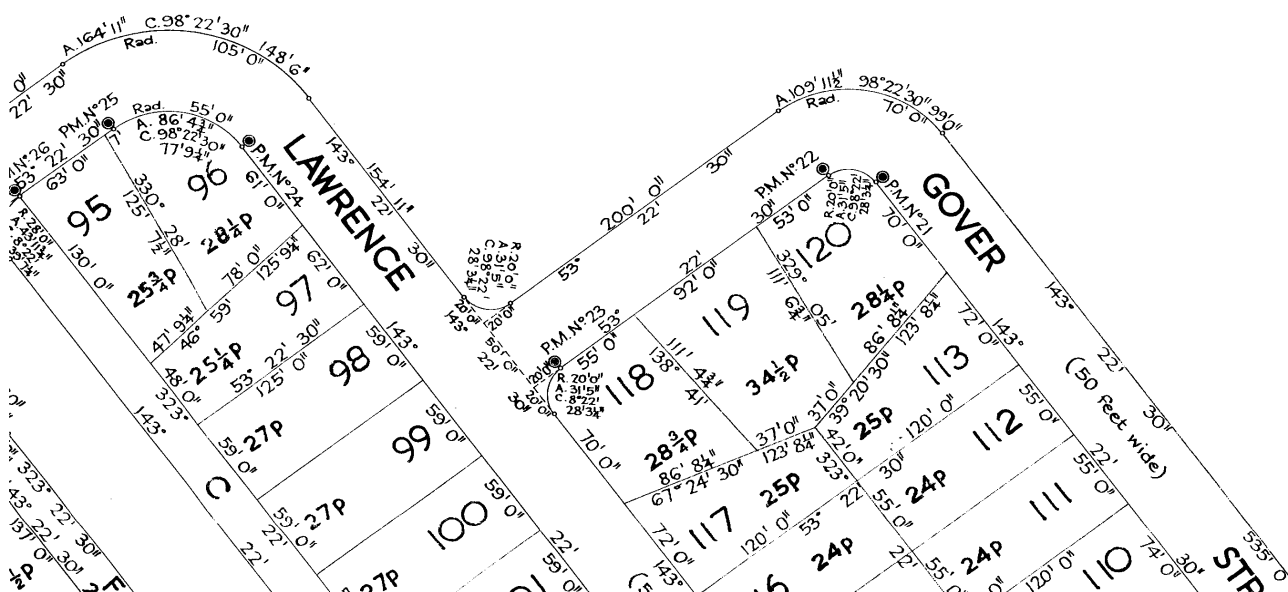
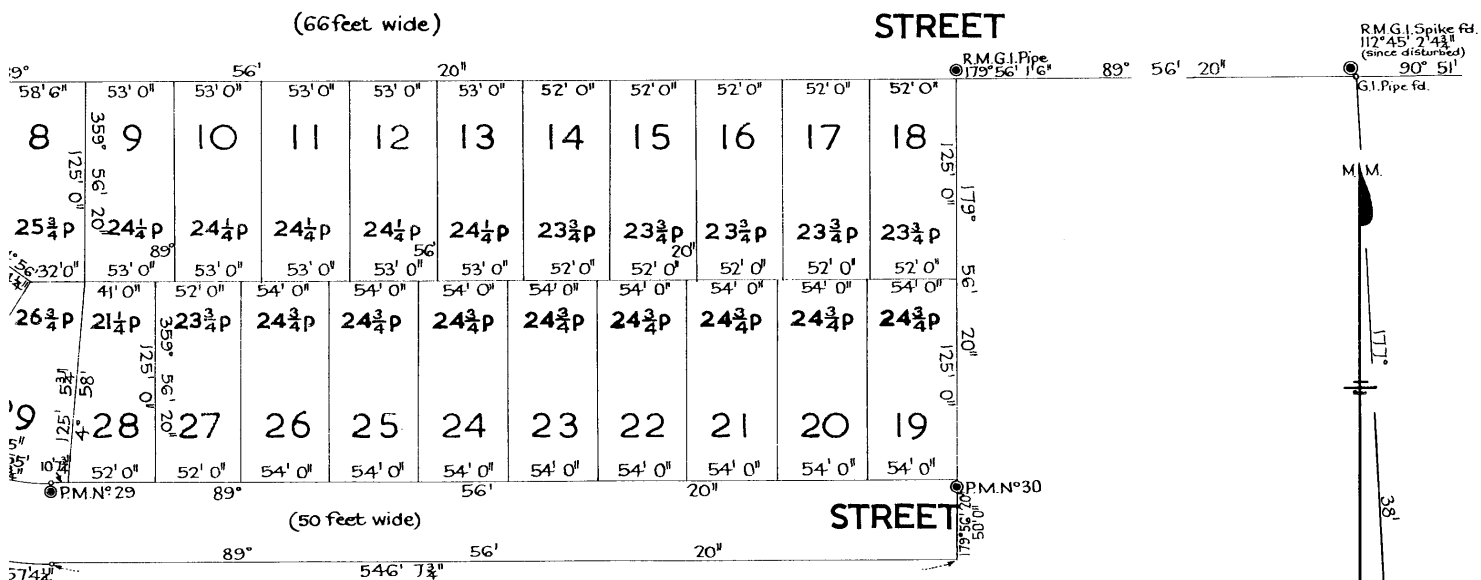


lands acquired for Housing Purposes
and in Govt. Gazette dated 27th. April, 1945.

DP 36368 (E)
FORMERLY
H. c P 1368

e 80 feet to an inch



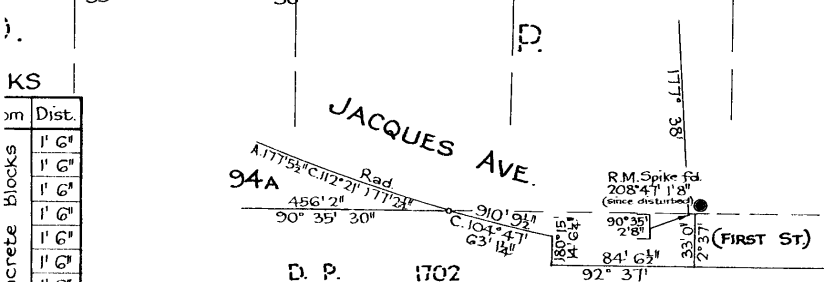


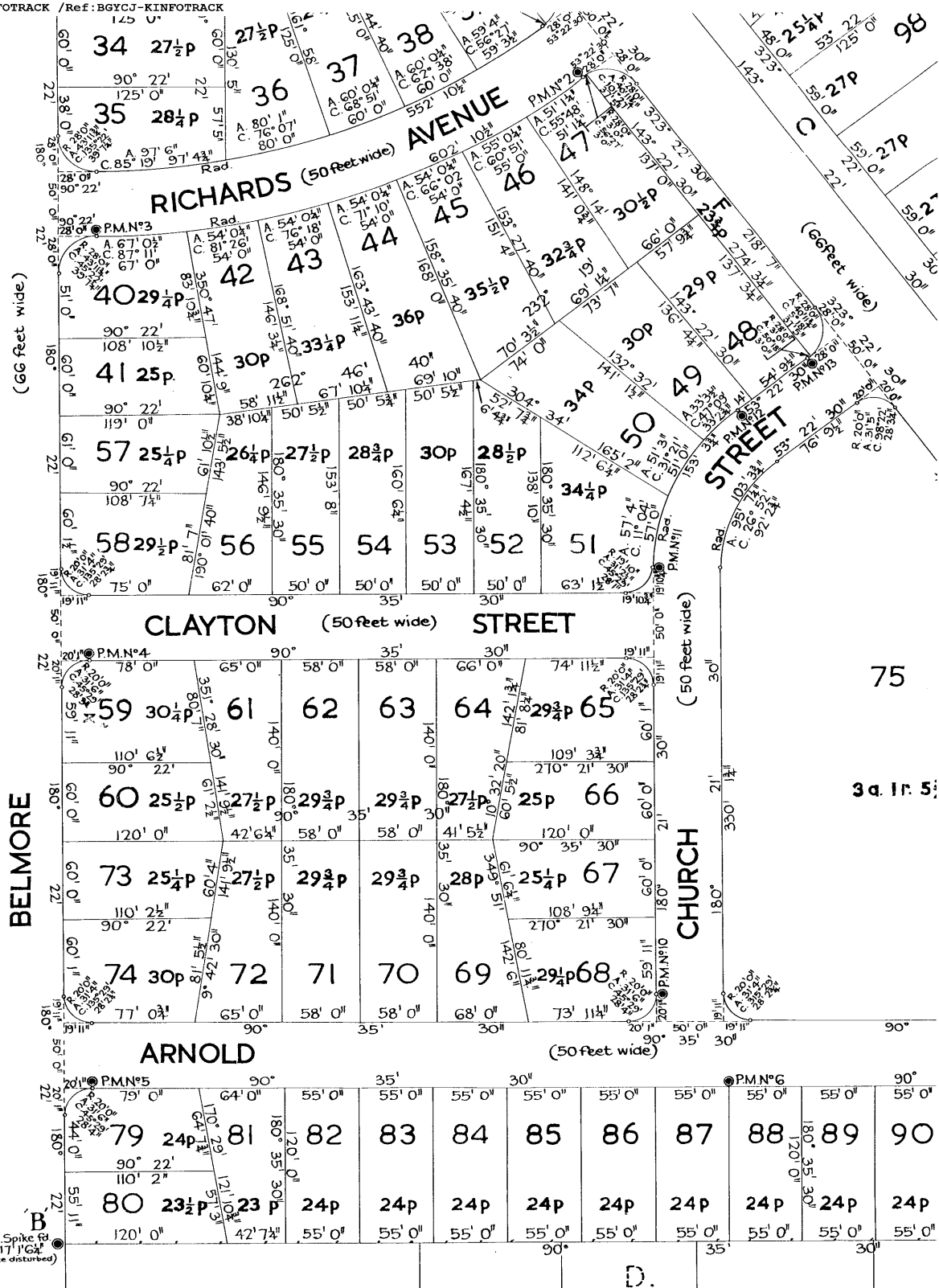
DIAGRAM Scale: $80' = 1"$

Francis D. Walsh

And I make this solemn declaration conscientiously believing the same to be true, and by virtue of the provisions of the Oaths Act, 1900

Surveyor registered under the Surveyors Act 1929.

Date of Survey 9th March, 1953



NOTE —

It is intended to dedicate to the Public the new roads Hedley Street, Goven Street, Lawrence Street, Jacques Avenue, Richards Avenue, Clayton Street, Church Street, Arnold Street, Trafalgar Street and the splayed corner of Lot 1 as public thoroughfares.

It is intended to grant Drainage Easement in favour of the Council of the Municipality of Hurstville over the site of the proposed drainage easement shown herein.

D.P. 36368 (E)

Approved by Council & Covered by Council Clerk's Certificate

No. of

Council Clerk.

Datum line of Azimuth A-B.

TABLE OF PERMANENT MARKS

Nº	Bearing	from	Dist.	Nº	Bearing	from	Dist.
1	233° 22'	1' 6"	20	233° 22'	1' 6"	20	233° 22'
2	143° 22'	1' 6"	21	233° 22'	1' 6"	21	233° 22'
3	180° 22'	1' 6"	22	143° 22'	1' 6"	22	143° 22'
4	180° 35'	1' 6"	23	143° 22'	1' 6"	23	143° 22'
5	180° 35'	1' 6"	24	233° 22'	1' 6"	24	233° 22'
6	180° 35'	1' 6"	25	143° 22'	1' 6"	25	143° 22'
7	180° 35'	1' 6"	26	143° 22'	1' 6"	26	143° 22'
8	312° 12'	1' 6"	27	53° 22'	1' 6"	27	53° 22'
9	312° 12'	1' 6"	28	53° 22'	1' 6"	28	53° 22'
10	270° 22'	1' 6"	29	359° 56'	1' 6"	29	359° 56'
11	270° 22'	1' 6"	30	359° 56'	1' 6"	30	359° 56'
12	323° 22'	1' 6"					
13	323° 22'	1' 6"					
18	144° 04'	1' 6"					
19	144° 45'	1' 6"					

94A
 456' 2"
 90° 35' 30"

D. P.

Municipality of Hurstville
~~Shire of~~

G289171 6-5-55

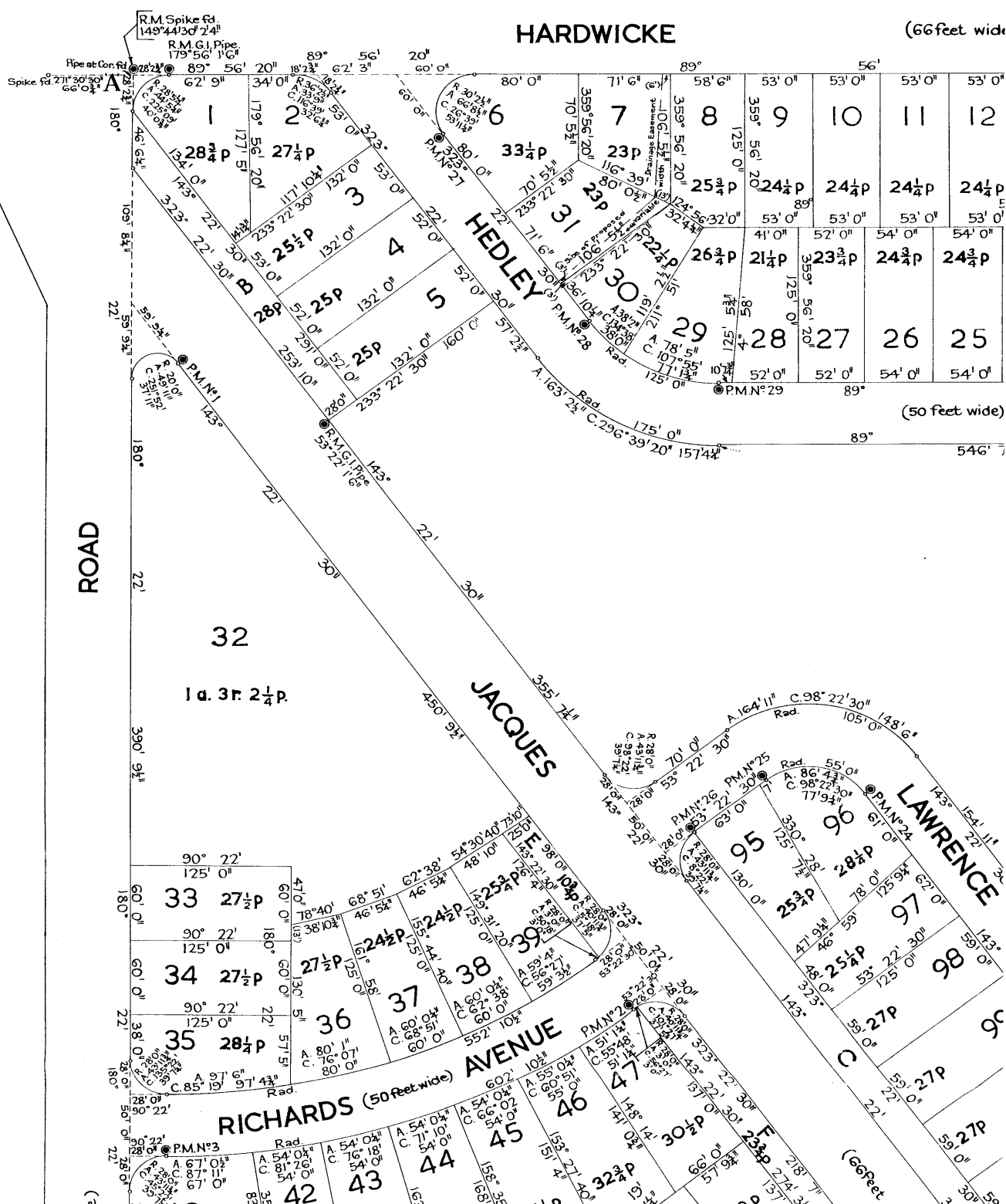
D.P. 36368 (E)

PLAN

of subdivision of lands acquired for Hou
by resumption notified in Govt. Gazette dated

PARISH OF ST. GEORGE COUNTY

Scale 80 feet to an inch



CONVERSION TABLE ADDED IN
REGISTRAR GENERAL'S DEPARTMENT

DP 36368	FEET INCHES	METRES
1	1 1/4	0.032
2	2 7/8	0.073
3	3 3/4	0.375
4	4 1/2	0.457
5	5 1/4	0.464
6	6 1/4	0.508
7	7 1/4	0.610
8	8 1/4	0.711
9	9 1/4	0.813
10	10 1/4	0.914
11	11 1/4	0.956
12	12 1/4	1.029
13	13 1/4	1.184
14	14 1/4	1.234
15	15 1/4	1.343
16	16 1/4	1.426
17	17 1/4	1.556
18	18 1/4	1.610
19	19 1/4	1.645
20	20 1/4	1.671
21	21 1/4	1.696
22	22 1/4	1.721
23	23 1/4	1.746
24	24 1/4	1.771
25	25 1/4	1.796
26	26 1/4	1.821
27	27 1/4	1.846
28	28 1/4	1.871
29	29 1/4	1.896
30	30 1/4	1.921
31	31 1/4	1.946
32	32 1/4	1.971
33	33 1/4	1.996
34	34 1/4	2.021
35	35 1/4	2.046
36	36 1/4	2.071
37	37 1/4	2.096
38	38 1/4	2.121
39	39 1/4	2.146

CONVERSION TABLE ADDED IN
REGISTRAR GENERAL'S DEPARTMENT

DP 36368	FEET INCHES	METRES
40	40 1/4	2.171
41	41 1/4	2.196
42	42 1/4	2.221
43	43 1/4	2.246
44	44 1/4	2.271
45	45 1/4	2.296
46	46 1/4	2.321
47	47 1/4	2.346
48	48 1/4	2.371
49	49 1/4	2.396
50	50 1/4	2.421
51	51 1/4	2.446
52	52 1/4	2.471
53	53 1/4	2.496
54	54 1/4	2.521
55	55 1/4	2.546
56	56 1/4	2.571
57	57 1/4	2.596
58	58 1/4	2.621
59	59 1/4	2.646
60	60 1/4	2.671
61	61 1/4	2.696
62	62 1/4	2.721
63	63 1/4	2.746

CONVERSION TABLE ADDED IN
REGISTRAR GENERAL'S DEPARTMENT

DP 36368	FEET INCHES	METRES
64	64 1/4	2.771
65	65 1/4	2.796
66	66 1/4	2.821
67	67 1/4	2.846
68	68 1/4	2.871
69	69 1/4	2.896
70	70 1/4	2.921
71	71 1/4	2.946
72	72 1/4	2.971
73	73 1/4	2.996
74	74 1/4	3.021
75	75 1/4	3.046
76	76 1/4	3.071
77	77 1/4	3.096
78	78 1/4	3.121
79	79 1/4	3.146
80	80 1/4	3.171
81	81 1/4	3.196
82	82 1/4	3.221
83	83 1/4	3.246
84	84 1/4	3.271
85	85 1/4	3.296
86	86 1/4	3.321
87	87 1/4	3.346
88	88 1/4	3.371
89	89 1/4	3.396
90	90 1/4	3.421
91	91 1/4	3.446
92	92 1/4	3.471
93	93 1/4	3.496
94	94 1/4	3.521
95	95 1/4	3.546
96	96 1/4	3.571
97	97 1/4	3.596
98	98 1/4	3.621
99	99 1/4	3.646
100	100 1/4	3.671
101	101 1/4	3.696
102	102 1/4	3.721
103	103 1/4	3.746
104	104 1/4	3.771
105	105 1/4	3.796
106	106 1/4	3.821
107	107 1/4	3.846
108	108 1/4	3.871
109	109 1/4	3.896
110	110 1/4	3.921
111	111 1/4	3.946
112	112 1/4	3.971
113	113 1/4	3.996
114	114 1/4	4.021
115	115 1/4	4.046
116	116 1/4	4.071
117	117 1/4	4.096
118	118 1/4	4.121
119	119 1/4	4.146
120	120 1/4	4.171

CONVERSION TABLE ADDED IN
REGISTRAR GENERAL'S DEPARTMENT

DP 36368	FEET INCHES	METRES
121	121 1/4	4.196
122	122 1/4	4.221
123	123 1/4	4.246
124	124 1/4	4.271
125	125 1/4	4.296
126	126 1/4	4.321
127	127 1/4	4.346
128	128 1/4	4.371
129	129 1/4	4.396
130	130 1/4	4.421
131	131 1/4	4.446
132	132 1/4	4.471
133	133 1/4	4.496
134	134 1/4	4.521
135	135 1/4	4.546
136	136 1/4	4.571
137	137 1/4	4.596
138	138 1/4	4.621
139	139 1/4	4.646
140	140 1/4	4.671
141	141 1/4	4.696
142	142 1/4	4.721
143	143 1/4	4.746
144	144 1/4	4.771
145	145 1/4	4.796
146	146 1/4	4.821
147	147 1/4	4.846
148	148 1/4	4.871
149	149 1/4	4.896
150	150 1/4	4.921
151	151 1/4	4.946
152	152 1/4	4.971
153	153 1/4	4.996
154	154 1/4	5.021
155	155 1/4	5.046
156	156 1/4	5.071
157	157 1/4	5.096
158	158 1/4	5.121
159	159 1/4	5.146
160	160 1/4	5.171
161	161 1/4	5.196
162	162 1/4	5.221
163	163 1/4	5.246
164	164 1/4	5.271
165	165 1/4	5.296
166	166 1/4	5.321
167	167 1/4	5.346
168	168 1/4	5.371
169	169 1/4	5.396
170	170 1/4	5.421
171	171 1/4	5.446
172	172 1/4	5.471
173	173 1/4	5.496
174	174 1/4	5.521
175	175 1/4	5.546
176	176 1/4	5.571
177	177 1/4	5.596
178	178 1/4	5.621
179	179 1/4	5.646
180	180 1/4	5.671
181	181 1/4	5.696
182	182 1/4	5.721
183	183 1/4	5.746
184	184 1/4	5.771
185	185 1/4	5.796
186	186 1/4	5.821
187	187 1/4	5.846
188	188 1/4	5.871
189	189 1/4	5.896
190	190 1/4	5.921
191	191 1/4	5.946
192	192 1/4	5.971
193	193 1/4	5.996
194	194 1/4	6.021
195	195 1/4	6.046
196	196 1/4	6.071
197	197 1/4	6.096
198	198 1/4	6.121
199	199 1/4	6.146
200	200 1/4	6.171

CONVERSION TABLE ADDED IN
REGISTRAR GENERAL'S DEPARTMENT

DP 36368	FEET INCHES	METRES
201	201 1/4	6.196
202	202 1/4	6.221
203	203 1/4	6.246
204	204 1/4	6.271
205	205 1/4	6.296
206	206 1/4	6.321
207	207 1/4	6.346
208	208 1/4	6.371
209	209 1/4	6.396
210	210 1/4	6.421
211	211 1/4	6.446
212	212 1/4	6.471
213	213 1/4	6.496
214	214 1/4	6.521
215	215 1/4	6.546
216	216 1/4	6.571
217	217 1/4	6.596
218	218 1/4	6.621
219	219 1/4	6.646
220	220 1/4	6.671
221	221 1/4	6.696
222	222 1/4	6.721
223	223 1/4	6.746
224	224 1/4	6.771
225	225 1/4	6.796
226	226 1/4	6.821
227	227 1/4	6.846
228	228 1/4	6.871
229	229 1/4	6.896
230	230 1/4	6.921
231	231 1/4	6.946
232	232 1/4	6.971
233	233 1/4	6.996
234	234 1/4	7.021
235	235 1/4	7.046
236	236 1/4	7.071
237	237 1/4	7.096
238	238 1/4	7.121
239	239 1/4	7.146
240	240 1/4	7.171
241	241 1/4	7.196
242	242 1/4	7.221
243	243 1/4	7.246
244	244 1/4	7.271
245	245 1/4	7.296
246	246 1/4	7.321
247	247 1/4	7.346
248	248 1/4	7.371
249	249 1/4	7.396
250	250 1/4	7.421

SIGNATURES, SEALS AND STATEMENTS of intention to dedicate public roads or to create public reserves, drainage reserves, easements, restrictions on the use of land or positive covenants.

SIGNED by me ARTHUR GEORGE DEWS as Delegate of the New South Wales Land and Housing Corporation and I hereby certify that I have no notice of the revocation of such delegation.

Arthur George Dews

Crown Lands Office Approval

Land Owner:
 Paper No.:
 Field Book:
 Pages:

Council's Certificate

I hereby certify that:-
 (a) the requirements of the Local Government Act, 1995 (other than the requirements of Part 3 Division 2 of the Water Board Act 1987 or Part 3 Division 7 of the Hunter Water Board (Consolidation) Act 1991);
 have been complied with by the applicant in relation to the proposed:
 (insert "new road", "subdivision" or "consolidated lot") set out herein

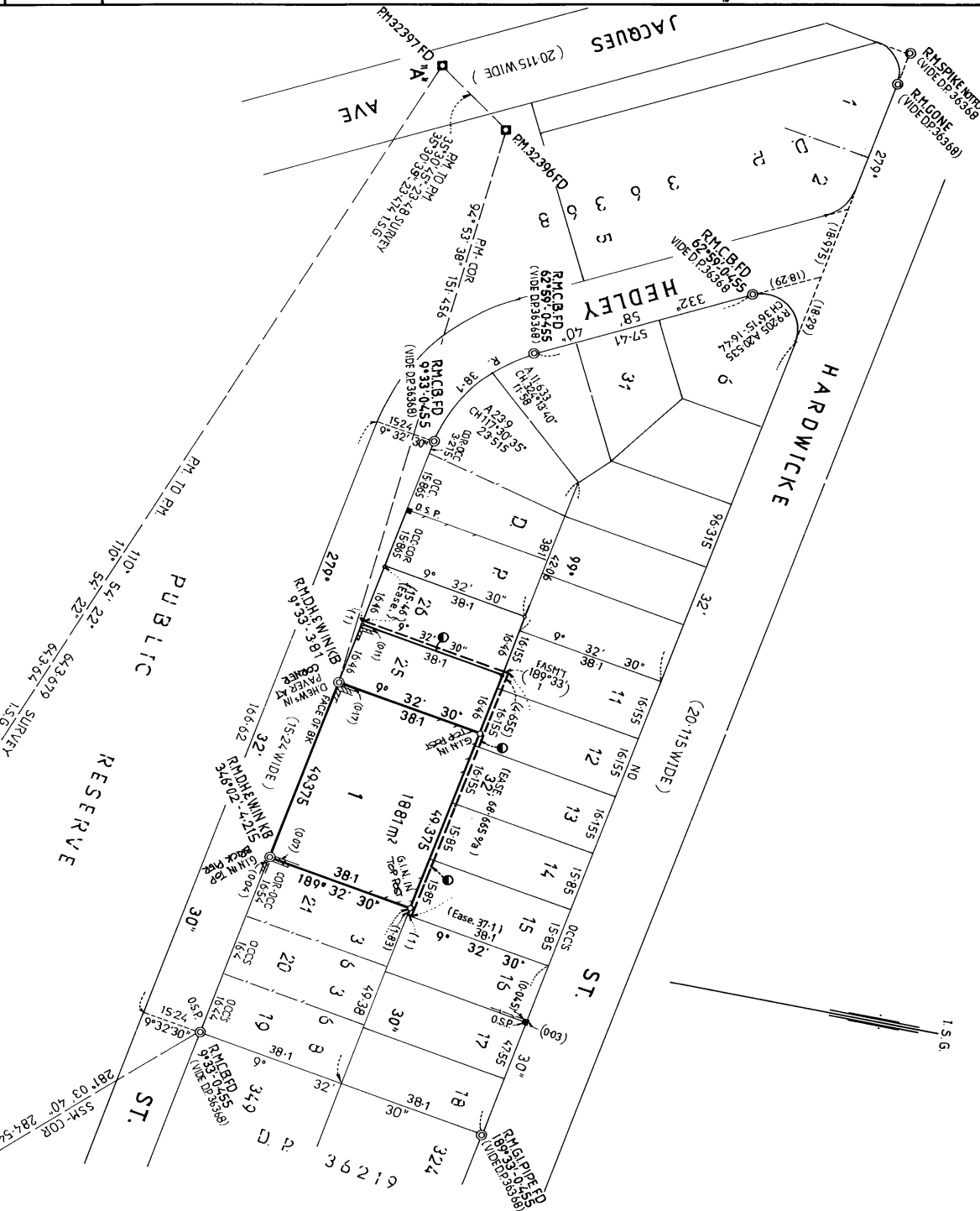
Subdivision No.:
 Date:
 Signature:
 General Manager/Authorised Person

*This part of the certificate is to be deleted where the application is only for a consolidated lot or the opening of a new road or where the Water Board and the Hunter Water Corporation Ltd. consent it is appropriate.

SURVEYOR'S REFERENCE: 15174

SURVEY PRACTICE REGULATION 1990: CLAUSE 32(2)			
MARK	I.S.G. CO-ORDINATES		ZONE ACC
	EASTING	NORTHING	
P.M. 32395	305 309.020	1 240 952.513	56/1 2
P.M. 32396	304 721.388	1 241 201.287	56/1 2
P.M. 32397	304 707.753	1 241 182.189	56/1 2
SOURCE: I.S.G. CO-ORDINATES ADOPTED FROM DEPT. OF C.A.L.M. AS AT 24/09/96			
COMBINED SEA LEVEL & SCALE FACTOR 0.99994			

10	20	30	40	50	60	70	80	90	100	110	120	130	140	150	160	170	180	190	200	210	220	230	240	250	260	270	280	290	300	310	320	330	340	350	360	370	380	390
Table of mm																																						



Plan Drawing only to appear in this space

OFFICE USE ONLY

DP 867603

Registered: 22.4.1997

C.A.:

Title System: TORRENS

Purpose: SUBDIVISION & EASEMENT

Ref. Map: U0037 - 52 & 54*

Last Plan: DP 36368

PLAN

OF CONSOLIDATION OF LOTS 22, 23, & 24 IN D.P. 36368 & EASEMENT TO DRAIN WATER 1.0 WIDE

Lengths are in metres. Reduction Ratio 1: 800

LOCALITY: RIVERWOOD

PARISH: ST. GEORGE

COUNTY: CUMBERLAND

This is sheet 1 of my plan in sheets.

1. ROBERT W. YOUNG

of 22 COOPER ST STRATHFIELD 2135

a surveyor registered under the Surveyors Act 1995, hereby certify that the survey represented in this plan is accurate, has been made in accordance with the Survey Practice Regulation 1990 and was completed on 17TH OCTOBER 1995.

Signature: *Robert W. Young*

Datum used in preparation of survey: Australian "A" - B" the Surveyors Act 1995

D.P. 36368

PLAN: FOR USE ONLY for statements of public reserves, drainage reserves, easements, restrictions on the use of land or positive covenants.

PURSUANT TO SEC.88B OF THE CONVEYANCING ACT 1919-1964 IT IS INTENDED TO CREATE

1. EASEMENT TO DRAIN WATER 1 WIDE.

PEAK 52

INSTRUMENT SETTING OUT TERMS OF EASEMENT INTENDED TO BE CREATED,
PURSUANT TO SECTION 88B OF THE CONVEYANCING ACT, 1919.

Lengths are in metres

(Sheet 1 of 1 sheets)

PART 1

PLAN

DP 867603

Plan of consolidation of lots 22, 23 & 24 in D.P. 36368 and easement to drain water 1 wide over lots 11-15 & 26 in D.P. 36368.

Full name and address of
proprietor of the land

New South Wales Land and Housing Corporation
23-31 Moore Street
LIVERPOOL NSW 2170

1. Identity of easement to be created
firstly referred to in the plan.

Easement to drain water 1 wide.

Schedule of lots affected

Lots burdened

15 (F.I. 15/36368)
14 (F.I. 14/36368)
13 (F.I. 13/36368)
12 (F.I. 12/36368)
11 (F.I. 11/36368)
26 (F.I. 26/36368)

Lots benefited

16 (F.I. 16/36368)
15, 16
14, 15 & 16
13, 14, 15 & 16
12, 13, 14, 15 & 16
11, 12, 13, 14, 15 & 16

SIGNED by me ARTHUR GEORGE DEWS as Delegate of the
New South Wales Land and Housing Corporation and I hereby
certify that I have no notice of the revocation of such delegation.


Arthur George Dews

REGISTERED



&

22.4.1997



FOLIO: 11/36368

SEARCH DATE	TIME	EDITION NO	DATE
-----	----	-----	----
27/8/2021	9:38 AM	1	22/4/1997

LAND

LOT 11 IN DEPOSITED PLAN 36368
LOCAL GOVERNMENT AREA GEORGES RIVER
PARISH OF ST GEORGE COUNTY OF CUMBERLAND
TITLE DIAGRAM DP36368

FIRST SCHEDULE

NEW SOUTH WALES LAND AND HOUSING CORPORATION

SECOND SCHEDULE (3 NOTIFICATIONS)

- 1 LAND EXCLUDES MINERALS (S.141 PUBLIC WORKS ACT, 1912)
- 2 DP867603 EASEMENT TO DRAIN WATER 1 WIDE AFFECTING THE PART(S)
SHOWN SO BURDENED IN DP867603
- 3 DP867603 EASEMENT TO DRAIN WATER 1 WIDE APPURTENANT TO THE
LAND ABOVE DESCRIBED

NOTATIONS

NOTE: THE CERTIFICATE OF TITLE FOR THIS FOLIO OF THE REGISTER DOES
NOT INCLUDE SECURITY FEATURES INCLUDED ON COMPUTERISED
CERTIFICATES OF TITLE ISSUED FROM 4TH JANUARY, 2004. IT IS
RECOMMENDED THAT STRINGENT PROCESSES ARE ADOPTED IN VERIFYING THE
IDENTITY OF THE PERSON(S) CLAIMING A RIGHT TO DEAL WITH THE LAND
COMPRISED IN THIS FOLIO.

UNREGISTERED DEALINGS: NIL

*** END OF SEARCH ***



FOLIO: 12/36368

SEARCH DATE	TIME	EDITION NO	DATE
-----	----	-----	----
27/8/2021	9:38 AM	1	22/4/1997

LAND

LOT 12 IN DEPOSITED PLAN 36368
LOCAL GOVERNMENT AREA GEORGES RIVER
PARISH OF ST GEORGE COUNTY OF CUMBERLAND
TITLE DIAGRAM DP36368

FIRST SCHEDULE

NEW SOUTH WALES LAND AND HOUSING CORPORATION

SECOND SCHEDULE (3 NOTIFICATIONS)

- 1 LAND EXCLUDES MINERALS (S.141 PUBLIC WORKS ACT, 1912)
- 2 DP867603 EASEMENT TO DRAIN WATER 1 WIDE AFFECTING THE PART(S)
SHOWN SO BURDENED IN DP867603
- 3 DP867603 EASEMENT TO DRAIN WATER 1 WIDE APPURTENANT TO THE
LAND ABOVE DESCRIBED

NOTATIONS

NOTE: THE CERTIFICATE OF TITLE FOR THIS FOLIO OF THE REGISTER DOES
NOT INCLUDE SECURITY FEATURES INCLUDED ON COMPUTERISED
CERTIFICATES OF TITLE ISSUED FROM 4TH JANUARY, 2004. IT IS
RECOMMENDED THAT STRINGENT PROCESSES ARE ADOPTED IN VERIFYING THE
IDENTITY OF THE PERSON(S) CLAIMING A RIGHT TO DEAL WITH THE LAND
COMPRISED IN THIS FOLIO.

UNREGISTERED DEALINGS: NIL

*** END OF SEARCH ***



FOLIO: 13/36368

SEARCH DATE	TIME	EDITION NO	DATE
-----	----	-----	----
27/8/2021	9:38 AM	1	22/4/1997

LAND

LOT 13 IN DEPOSITED PLAN 36368
LOCAL GOVERNMENT AREA GEORGES RIVER
PARISH OF ST GEORGE COUNTY OF CUMBERLAND
TITLE DIAGRAM DP36368

FIRST SCHEDULE

NEW SOUTH WALES LAND AND HOUSING CORPORATION

SECOND SCHEDULE (3 NOTIFICATIONS)

- 1 LAND EXCLUDES MINERALS (S.141 PUBLIC WORKS ACT, 1912)
- 2 DP867603 EASEMENT TO DRAIN WATER 1 WIDE AFFECTING THE PART(S)
SHOWN SO BURDENED IN DP867603
- 3 DP867603 EASEMENT TO DRAIN WATER 1 WIDE APPURTENANT TO THE
LAND ABOVE DESCRIBED

NOTATIONS

NOTE: THE CERTIFICATE OF TITLE FOR THIS FOLIO OF THE REGISTER DOES
NOT INCLUDE SECURITY FEATURES INCLUDED ON COMPUTERISED
CERTIFICATES OF TITLE ISSUED FROM 4TH JANUARY, 2004. IT IS
RECOMMENDED THAT STRINGENT PROCESSES ARE ADOPTED IN VERIFYING THE
IDENTITY OF THE PERSON(S) CLAIMING A RIGHT TO DEAL WITH THE LAND
COMPRISED IN THIS FOLIO.

UNREGISTERED DEALINGS: NIL

*** END OF SEARCH ***



FOLIO: 14/36368

SEARCH DATE	TIME	EDITION NO	DATE
-----	----	-----	----
27/8/2021	9:38 AM	1	22/4/1997

LAND

LOT 14 IN DEPOSITED PLAN 36368
LOCAL GOVERNMENT AREA GEORGES RIVER
PARISH OF ST GEORGE COUNTY OF CUMBERLAND
TITLE DIAGRAM DP36368

FIRST SCHEDULE

NEW SOUTH WALES LAND AND HOUSING CORPORATION

SECOND SCHEDULE (3 NOTIFICATIONS)

- 1 LAND EXCLUDES MINERALS (S.141 PUBLIC WORKS ACT, 1912)
- 2 DP867603 EASEMENT TO DRAIN WATER 1 WIDE AFFECTING THE PART(S)
SHOWN SO BURDENED IN DP867603
- 3 DP867603 EASEMENT TO DRAIN WATER 1 WIDE APPURTENANT TO THE
LAND ABOVE DESCRIBED

NOTATIONS

NOTE: THE CERTIFICATE OF TITLE FOR THIS FOLIO OF THE REGISTER DOES
NOT INCLUDE SECURITY FEATURES INCLUDED ON COMPUTERISED
CERTIFICATES OF TITLE ISSUED FROM 4TH JANUARY, 2004. IT IS
RECOMMENDED THAT STRINGENT PROCESSES ARE ADOPTED IN VERIFYING THE
IDENTITY OF THE PERSON(S) CLAIMING A RIGHT TO DEAL WITH THE LAND
COMPRISED IN THIS FOLIO.

UNREGISTERED DEALINGS: NIL

*** END OF SEARCH ***



FOLIO: 15/36368

SEARCH DATE	TIME	EDITION NO	DATE
-----	----	-----	----
27/8/2021	9:38 AM	1	22/4/1997

LAND

LOT 15 IN DEPOSITED PLAN 36368
LOCAL GOVERNMENT AREA GEORGES RIVER
PARISH OF ST GEORGE COUNTY OF CUMBERLAND
TITLE DIAGRAM DP36368

FIRST SCHEDULE

NEW SOUTH WALES LAND AND HOUSING CORPORATION

SECOND SCHEDULE (3 NOTIFICATIONS)

- 1 LAND EXCLUDES MINERALS (S.141 PUBLIC WORKS ACT, 1912)
- 2 DP867603 EASEMENT TO DRAIN WATER 1 WIDE AFFECTING THE PART(S)
SHOWN SO BURDENED IN DP867603
- 3 DP867603 EASEMENT TO DRAIN WATER 1 WIDE APPURTENANT TO THE
LAND ABOVE DESCRIBED

NOTATIONS

NOTE: THE CERTIFICATE OF TITLE FOR THIS FOLIO OF THE REGISTER DOES
NOT INCLUDE SECURITY FEATURES INCLUDED ON COMPUTERISED
CERTIFICATES OF TITLE ISSUED FROM 4TH JANUARY, 2004. IT IS
RECOMMENDED THAT STRINGENT PROCESSES ARE ADOPTED IN VERIFYING THE
IDENTITY OF THE PERSON(S) CLAIMING A RIGHT TO DEAL WITH THE LAND
COMPRISED IN THIS FOLIO.

UNREGISTERED DEALINGS: NIL

*** END OF SEARCH ***



FOLIO: 16/36368

SEARCH DATE	TIME	EDITION NO	DATE
-----	----	-----	----
27/8/2021	9:38 AM	1	22/4/1997

LAND

LOT 16 IN DEPOSITED PLAN 36368
LOCAL GOVERNMENT AREA GEORGES RIVER
PARISH OF ST GEORGE COUNTY OF CUMBERLAND
TITLE DIAGRAM DP36368

FIRST SCHEDULE

NEW SOUTH WALES LAND AND HOUSING CORPORATION

SECOND SCHEDULE (2 NOTIFICATIONS)

- 1 LAND EXCLUDES MINERALS (S.141 PUBLIC WORKS ACT, 1912)
- 2 DP867603 EASEMENT TO DRAIN WATER 1 WIDE APPURTENANT TO THE
LAND ABOVE DESCRIBED

NOTATIONS

NOTE: THE CERTIFICATE OF TITLE FOR THIS FOLIO OF THE REGISTER DOES
NOT INCLUDE SECURITY FEATURES INCLUDED ON COMPUTERISED
CERTIFICATES OF TITLE ISSUED FROM 4TH JANUARY, 2004. IT IS
RECOMMENDED THAT STRINGENT PROCESSES ARE ADOPTED IN VERIFYING THE
IDENTITY OF THE PERSON(S) CLAIMING A RIGHT TO DEAL WITH THE LAND
COMPRISED IN THIS FOLIO.

UNREGISTERED DEALINGS: NIL

*** END OF SEARCH ***